

Project: Pillowcase with Sweet Dreams Appliqué Band



Pattern 11 American Patchwork & Quilting
1 MILLION
PILLOWCASE CHALLENGE

Project: Pillowcase with Sweet Dreams Appliqué Band

Materials**For one pillowcase:**

- $\frac{3}{8}$ yard print No. 1 (blocks)
- $\frac{7}{8}$ yard print No. 2 (pillowcase body)
- $\frac{1}{4}$ yard print No. 3 (appliqués)
- Lightweight fusible web

Finished pillowcase: 30×20" (fits a standard-size bed pillow)

Finished block: 2 $\frac{1}{2}$ ×5"

Quantities are for 44/45"-wide, 100% cotton fabrics.

Measurements include $\frac{1}{2}$ " seam allowances for pillowcase construction. Sew with right sides together unless otherwise stated.

Cut Fabrics

To use fusible web for appliquéing "sweet dreams" letters, complete the following steps:

1. Place fusible web, paper side up, over patterns, *page 4*. Use a pencil to trace patterns the number of times indicated, leaving $\frac{1}{2}$ " between tracings. Cut on drawn shapes roughly $\frac{1}{4}$ " outside drawn lines.
2. Following manufacturer's instructions, press fusible-web shapes onto wrong side of designated fabric; let cool. Cut out pattern pieces on drawn lines.

From print No. 1, cut:

- 1—10×41" rectangle

From print No. 2, cut:

- 1—26 $\frac{1}{2}$ ×41" rectangle

From print No. 3, cut:

- 3 of E Pattern
- 2 of S Pattern
- 1 each of A, D, M, R, T, and W patterns

Assemble Pillowcase

1. Fold No. 1 print 10×41" rectangle in half lengthwise with wrong side inside, press to make pillowcase band.
2. With raw edges aligned, sew pillowcase band to a long edge of No. 2 print 26 $\frac{1}{2}$ ×41" rectangle (**Diagram 1**). Press band open, pressing seam toward print No. 2 rectangle, to make pillowcase unit.
3. Referring to **Diagram 2**, arrange "sweet dreams" letter appliqués atop pillowcase band. Fuse in place following manufacturer's instructions. Using matching thread and a small buttonhole stitch, machine-appliqué letters in place. Press appliquéd area from wrong side.
4. Fold appliquéd unit in half to form a 30 $\frac{1}{2}$ ×20 $\frac{1}{2}$ " rectangle. Sew together long edges and print No. 2 short edges to make pillowcase (**Diagram 3**). Turn right side out and press flat.

Fabrics are from the Pristine collection for Robert Kaufman Fabrics (robertkaufman.com).

Project: Pillowcase with Sweet Dreams Appliqué Band

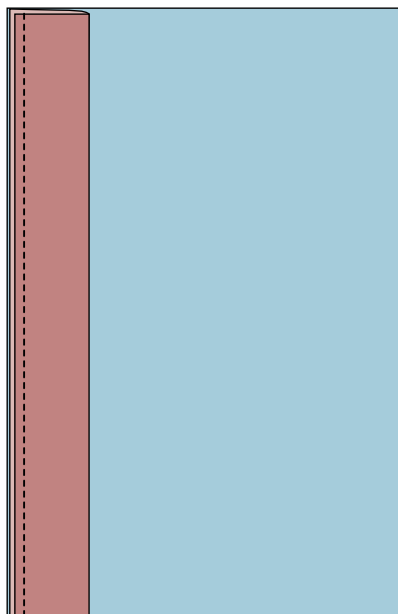


DIAGRAM 1

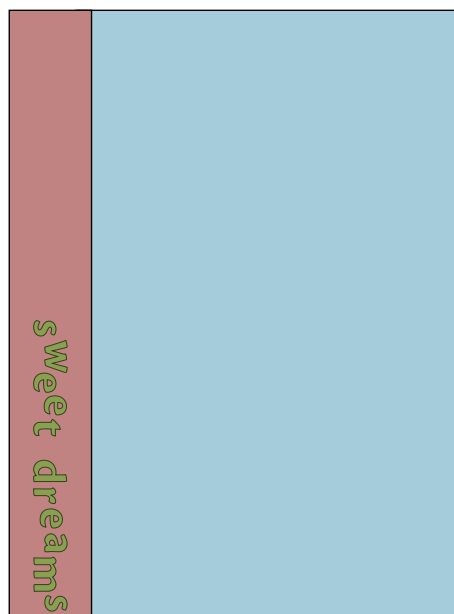
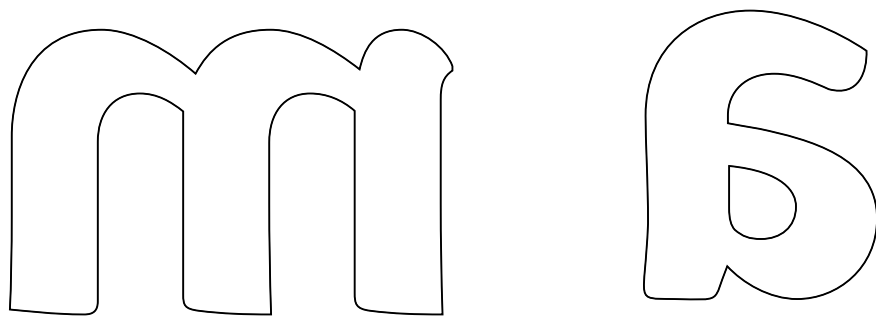
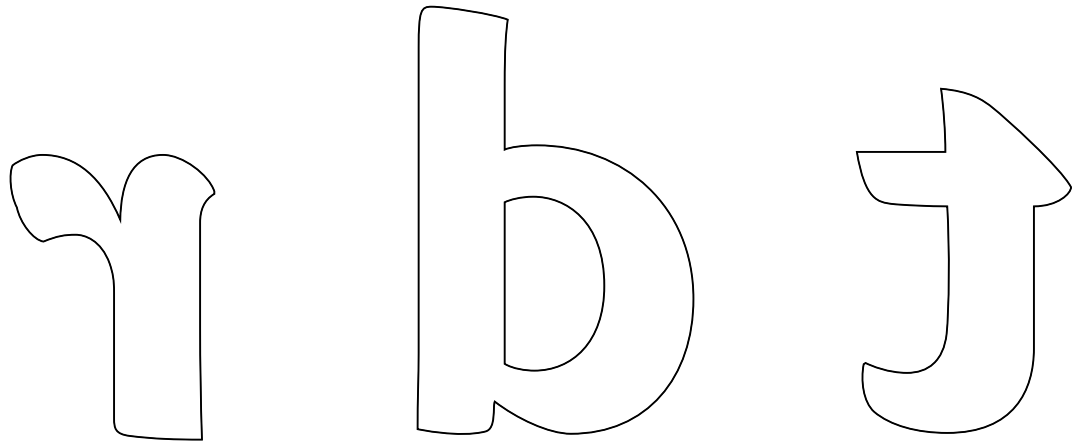


DIAGRAM 2



DIAGRAM 3

Project: Pillowcase with Sweet Dreams Appliqué Band



This box should measure 1".



*** NOTE:**

When printing a downloadable pdf, set Page Scaling preference to NONE to print patterns at 100%. Do NOT "Shrink to Fit" or "Fit to Printable Area."